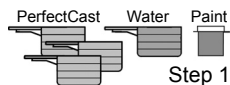
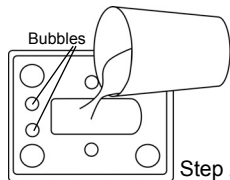




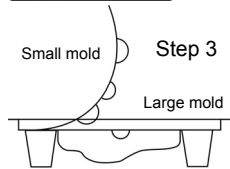
KRAZY KARS® INSTRUCTIONS



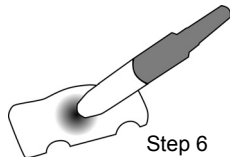
Step 1



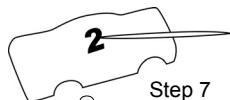
Step 2



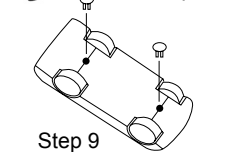
Step 3



Step 6



Step 7



Step 9

Included: PerfectCast, measuring scoop, mold trays, BLOpen, gloss, paint pots, paintbrush, axle mounts or glue, decals and wheels to make 2 vehicles.

Needed: Disposable mixing cup, spoon or mixing stick, paper clip or toothpick and paper towel.

Step 1: Pour 3 scoops of PerfectCast into a disposable container. Pour 1 scoop of warm water into the container. Pour the contents of one of the paint pots into the mixture. Stir the mixture with a spoon or mixing stick until there are no lumps (about 2 minutes). If mixture is too thin, add a pinch of PerfectCast until mixture is like melted ice cream. Tap the container on the table several times to remove air bubbles.

Step 2: Pour mixture into the large mold (vehicle) until it brims over the surface. Tap mold a few times to release air bubbles.

Step 3: Place the small mold (wheels), matching the bubbles on one end, into the indentations of the large mold. Bend the small mold beginning with the bubbles and slowly push it into the large mold. Be careful not to trap air in the mold. Place a small glass or something of similar weight on the top of the mold to keep it flat. Let the cast dry for 1 hour. If a spoon is used for mixing, wash it immediately before PerfectCast hardens.

WARNING: Do not pour excess PerfectCast into the drain or toilet bowl. Dispose of excess material in the garbage.

Step 4: Remove the small mold from the vehicle by slowly peeling it back. Turn the large mold upsidedown and gently tap on the top until the vehicle falls out.

Step 5: Sand the seamline from the vehicle and the wheel wells until smooth. Place the axles in the grooves on the bottom of the vehicle to make sure there is enough space to allow the wheels to turn. **Do not insert axle mounts.** If there is not enough room, sand the wheel wells until the wheels can move freely. **Remove wheels for painting.**

Step 6: Paint the vehicle with a BLOpen. Use the same color that was mixed with the PerfectCast. Let dry for at least 1 hour. For best results, let dry overnight. Wrapping the cast in paper towels and/or placing it in the sun can speed up drying time. **Do not use microwave or oven. Decals stick better to dry surfaces.** See BLOpen instructions on page 2.

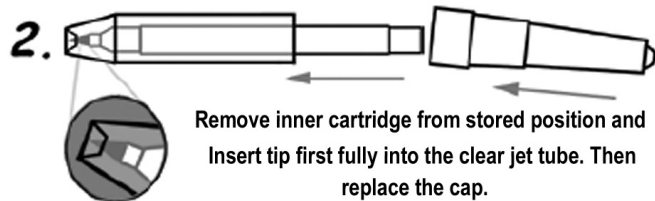
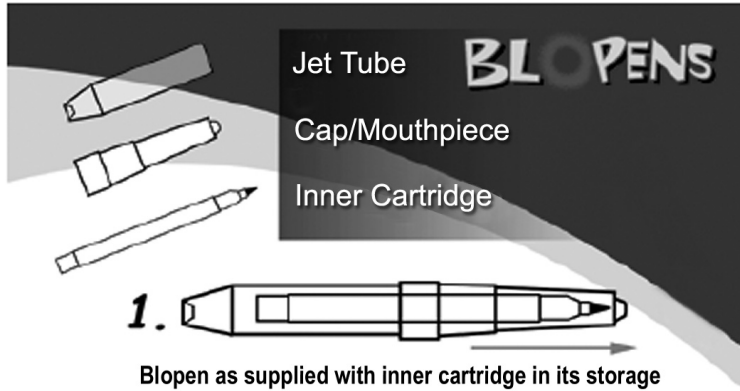
Step 7: Rub all surfaces of the model vigorously with paper towel until shiny. Paint a thin coat of gloss varnish over the entire top of the vehicle. Wait at least 30 minutes before applying decals.

Step 8: Before removing the decals, warm them by rubbing between your hands. Remove decals from paper and place on vehicle. Use a toothpick or paperclip to remove small decals from paper and place them on the vehicle. Using a toothpick or paperclip allows for more precise positioning of the decals. Models with large decals should be put on in this order: 1) grill, 2) top, 3) side panels, 4) side windows, 5) rear panel. Once the decal is placed on the vehicle, **do not remove.** The decal will pull off the gloss varnish.

Step 9: Krazy Kars come with glue or axle mounts. Place a set of wheels in each groove on the model bottom. Making sure they are centered, either glue the axles or push the axle mounts over the axles and into the hole between the wheels.

Step 10: Your Krazy Kar is ready to race.

BLOPEN INSTRUCTIONS



ATTENTION

Make sure you push the inner cartridge all the way into the jet tube, otherwise the Blopen will not spray.
Always return the Blopen to its storage position (1) after using.

WASHING INSTRUCTIONS

Blopens special formula allows stain removal from skin and nearly all clothing. Stains can be removed from skin with soap and water. Normal laundering procedures remove stains from cotton, polyester, acrylic, nylon and blends of these fabrics. For best results, wash as soon as possible in hot water.

CAUTION

- Parental supervision recommended.
- Choking Hazard. Small parts, not for children under 3 years.
- Only spray Blopens on paper and project items, never spray towards anyone's face or eyes.
- Take regular breaks from spraying.